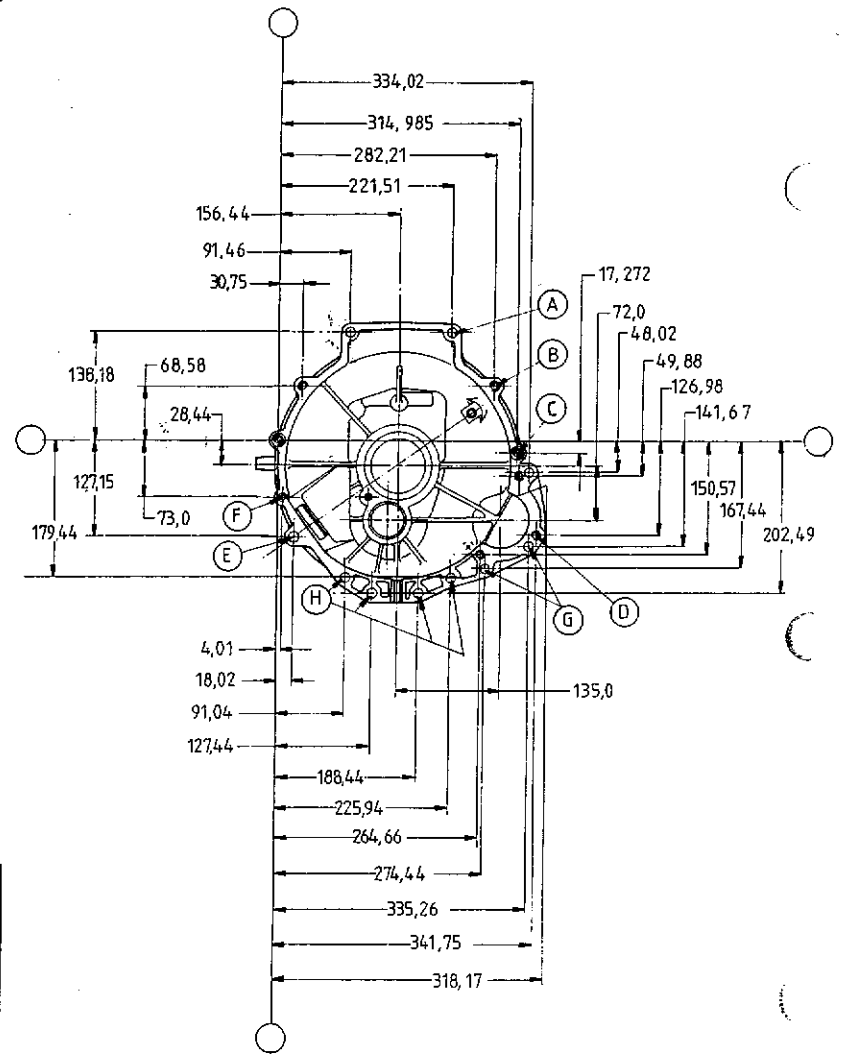
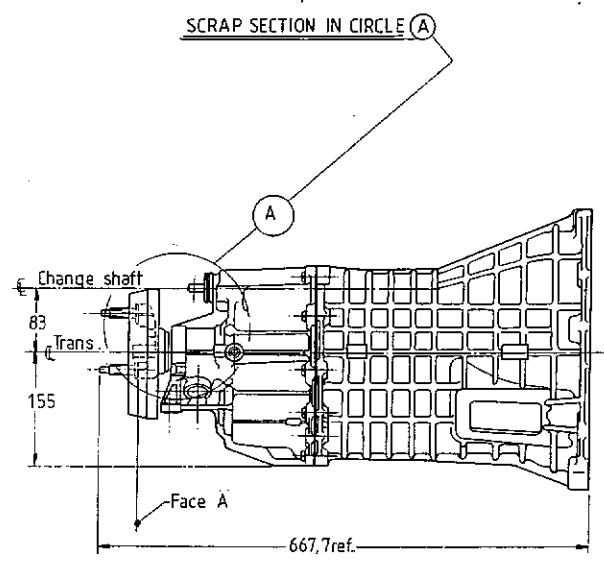
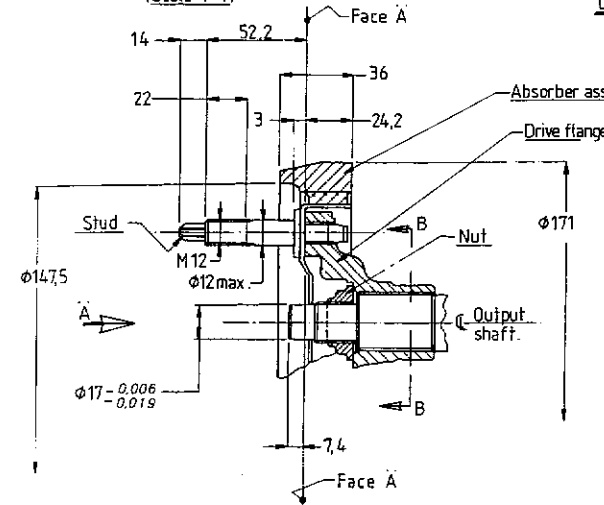
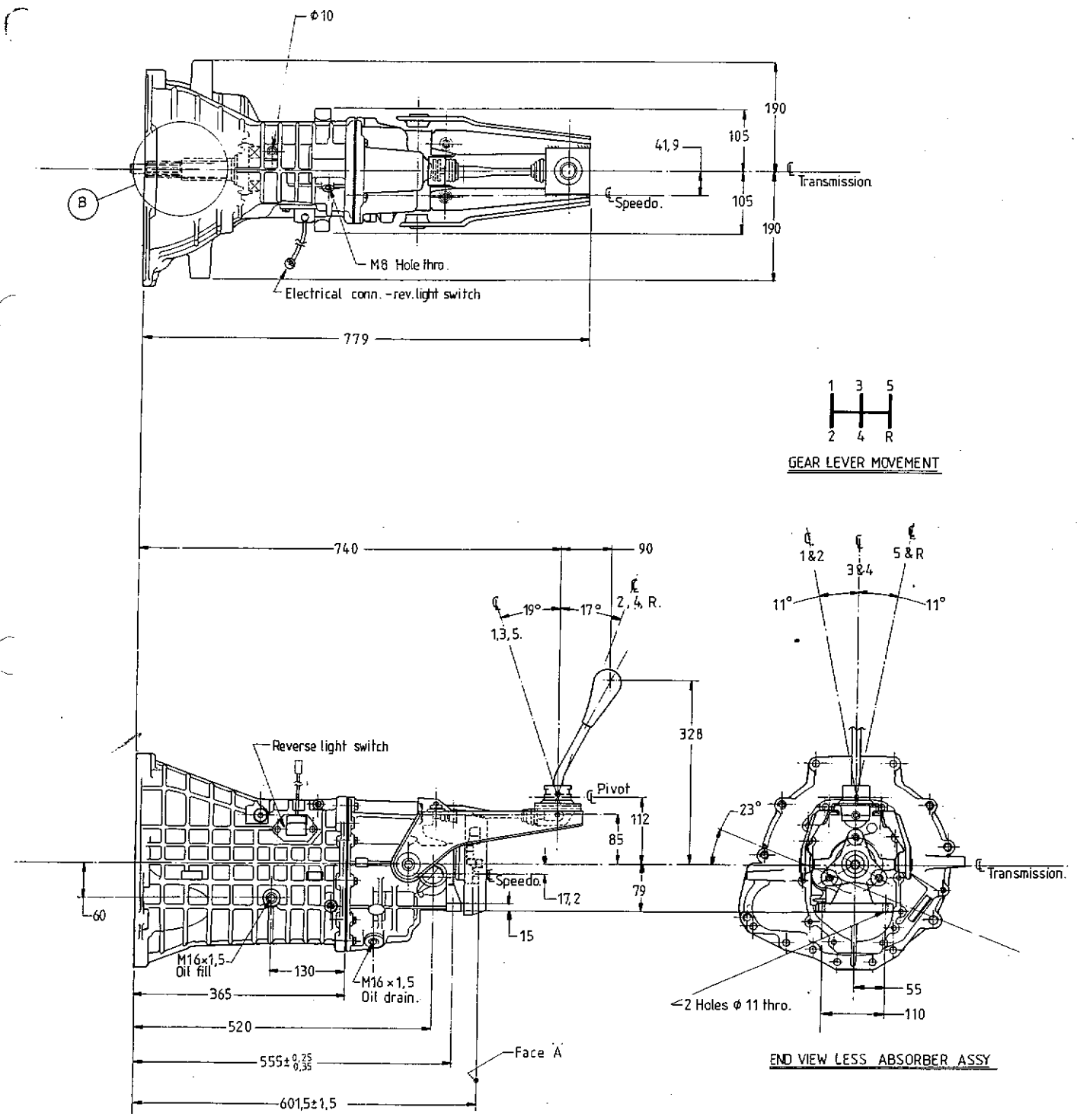


- (A) 2 Holes $\phi 11 \pm 0.25 \times 21.5$ thro.
- (B) 2 Holes $\phi M10 \times 22.5$ thro.
- (C) 2 Holes $\phi M10 \times 25$ thro.
CBored $\phi 12.75 \pm 0.027 \times 6.6$ deep nom.
- (D) 3 Holes $M10 \times 22.5$ thro.
Hole marked $\times 25$ deep, 17 full thrd.
- (E) 1 Hole $\phi 12.45 \pm 0.25 \times 13$ thro.
- (F) 1 Hole M6
- (G) 3 Holes $\phi 11.5 \pm 0.3 \times 22.5$ thro.
- (H) 4 Holes $\phi 11 \pm 0.25 \times 22.5$ thro.



INVOLUTE SPLINE DATA	Section A - #	Section B - B
N° of teeth	23	26
Module	1,0583 / 0,5292	1,0583 / 0,5292
Pressure Angle	30°	45°
Base ϕ	21,0799	19,457
Ref ϕ	24,341	27,517
Tip ϕ	25,639 ± 0.229	28,63 ± 0.25
Root ϕ	22,839 max.	26,825 max.
Tooth thickness	Actual 1,557 min.	1,812 min.
	Effective 1,636 max.	1,885 max.
Pin ϕ	2,032	2,032
Dimension over pins	27,265 min.	30,879 min
Helix Angle		19° ± 0 R.H.



- Gear Ratios**
DOHC
- 1st - 3,89 : 1
 - 2nd - 2,08 : 1
 - 3rd - 1,34 : 1
 - 4th - 1,00 : 1
 - 5th - 0,82 : 1
 - Rev. - 3,51 : 1

Input torque 250 Nm.
Weight 30 kg. (dry)
Oil Capacity 1,2 litres.
Oil spec. A.T.F.
Speedo drive gear - 7th

Dims are in Millimetres.
3rd. angle projection.

VERTRAULICH CONFIDENTIAL

10 20 30 40 50 60 70 80 90 100 110 120mm

OBER ANGEBENER MASSSTAB DIENST NUR ALS BEZUGNAHME ABOVE SCALE FOR REFERENCE ONLY

REFERENCES Latest change Jul. 88

DR. *[Signature]* DATE Jun. 87 CK. APP.

NICHT ABMESSEN MASSSTAB 1 : 5 SCALE DO NOT SCALE

PART NAME INSTALLATION - TRANSMISSION ASSY.
5 Speed MT 75 for use with DOHC Engines in Sierra (Scorpio)

TEILNUMMER/PART NR. TND - 27R - A